

TP40

Single point load cell



Top Quality, single point load cell from Totalcomp

- *IP67 protection*
- *7 kg to 200 kg capacities*
- *Aluminum or stainless steel construction*
- *Optional NTEP 3000d & OIML C3 classes*
- *Environmentally sealed*
- *10 ft 6 wire cable*

 **Totalcomp** Scales & Components

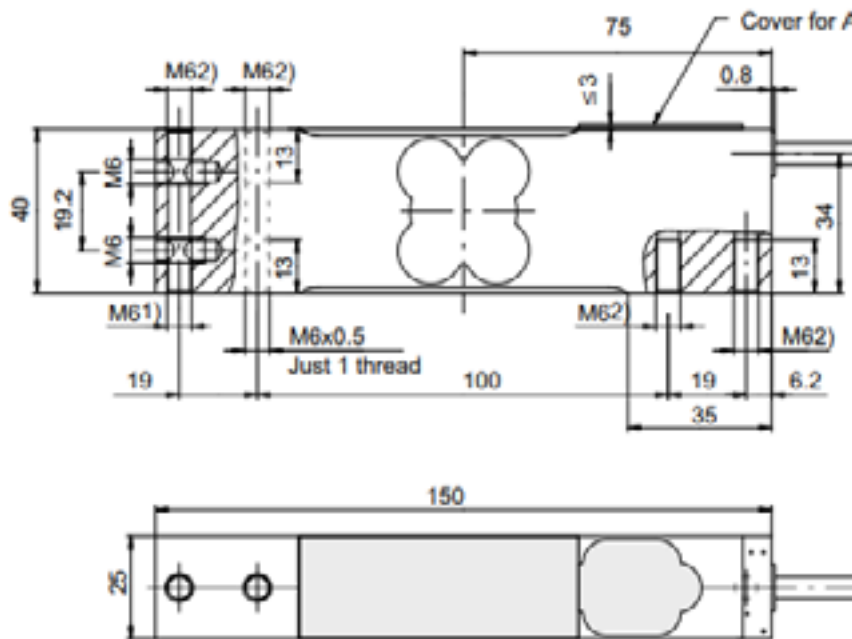
13-01 Pollitt Drive Ext, Fair Lawn NJ 07410
Phone 201-797-2718 Fax 201-797-2287

email: sales@totalcomp.com

Specifications

TP40

The Totalcomp TP40 single point load cells are interchangeable with Teda model 1040. They are built to meet or exceed all manufacturers specs for this type of cell. They are constructed from aluminum or stainless steel and sealed to IP67.



Part Number	Capacity	Stock #
Aluminum		
TP40-7kg	7 kg	3056
TP40-10kg	10 kg	3057
TP40-15kg	15 kg	3058
TP40-20kg	20 kg	3059
TP40-30kg	30 kg	3060
TP40-50kg	50 kg	3061
TP40-75kg	75 kg	3062
TP40-100kg	100 kg	3063
TP40-200kg	200 kg	6479
Stainless steel		
TP40-10kg-SS	10 kg	3065
TP40-15kg-SS	15 kg	3066
TP40-20kg-SS	20 kg	3067
TP40-30kg-SS	30 kg	3068
TP40-50kg-SS	50 kg	3069
TP40-75kg-SS	75 kg	3070
TP40-100kg-SS	100 kg	3071
TP40-150kg-SS	150 kg	6187

Performance

Full Scale Output	2.00 mv/v
Total error	0.05% FS
Nonlinearity	0.03% FS
Hysteresis	0.05% FS
Creep in 30 min	0.03% FS
Non-Repeatability	0.01% FS
Zero Balance	5.00% FS
Overload, Safe	150% FS
Overload, Ultimate	300% FS

Electrical

Bridge Resistance	
Input	350 ohms
Output	350 ohms
Excitation Voltage	10VDC(15VDC Max)
Insulation Resistance	5KMohms@50VDC

Temperature

Compensated Range	-10 deg C to +40 deg C
Temperature Safe Range	-20 deg C to +60 deg C

Effect on Zero Balance

0.002% FS/ deg C

Effect on FS Output

0.001 FS/ deg C

Mechanical

Material	Aluminum or Stainless steel
Finish	Anodized Al or Polished SS
Sealing	IP67
Weight	2 lb

Wiring

Cable length & Type
10 ft, 6 wire

Cable Color Code

Blue	Excitation +
Black	Excitation -
Green	Sense +
Gray	Sense -
White	Output +
Red	Output -
Yellow	Shield

Totalcomp Limited Warranty

Totalcomp warrants this product to be free of defects in materials and/or workmanship and suitable for the purpose intended as outlined in this sheet. This warranty is effective and shall cover the purchaser for one year from the date of shipment from our plant. If this product is found to be defective by our inspection in accordance with the above listed criteria, we will replace or repair it at our expense. For warranty service, please obtain a return authorization number from us and return the item, shipping prepaid, with a written description of the problem. We will respond promptly with the results of our evaluation.

 **Totalcomp** Scales & Components

13-01 Pollitt Drive Ext, Fair Lawn NJ 07410

Phone 201-797-2718 Fax 201-797-2287 email: sales@totalcomp.com